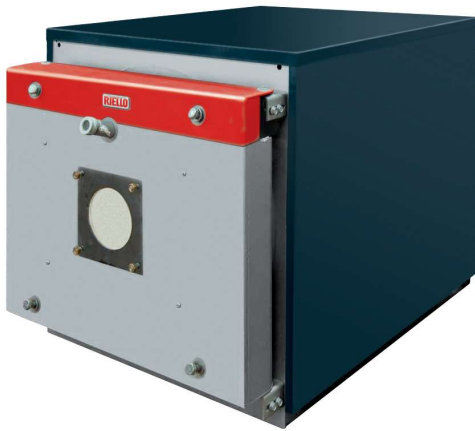


Two flue gas passes steel jet burner boilers

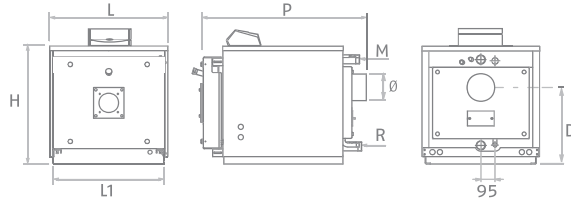
# RTQ 2S

Products up to 400 kW only for replacement, till 1<sup>st</sup> January 2018, in conformity of point 2 (G) Article 1 of Regulation EU N. 813/2013.

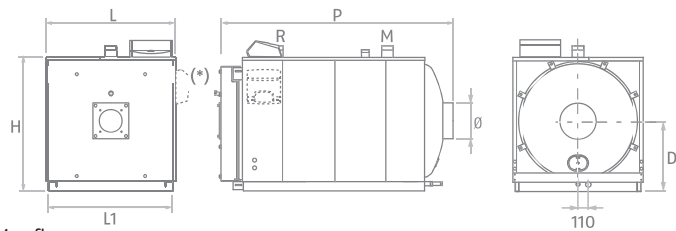


- Single-piece steel boilers, that can be matched with any fuel jet burners
- Provided with completely wet combustion chamber with free dilation and flame-inversion (square range).

RTQ 2S 50-235



RTQ 2S 297-5000



M = flow  
R = return

Description	H mm	L mm	L1 mm	P mm	D mm	Ø mm	Net weight kg
RTQ 50 2S	605	605	560	885	325	139	127
RTQ 64 2S	605	605	560	1035	325	139	160
RTQ 82 2S	740	705	660	970	384	179	199
RTQ 105 2S	740	705	660	1120	384	179	225
RTQ 154 2S	790	805	753	1220	500	180	288
RTQ 203 2S	840	853	803	1400	525	180	382
RTQ 235 2S	840	853	803	1400	525	180	382
RTQ 297 2S	980	925	875	1550	525	200	458
RTQ 323 2S	980	925	875	1550	525	200	458
RTQ 357 2S	980	925	875	1550	525	200	478
RTQ 418 2S	1030	975	925	1770	550	250	630
RTQ 467 2S	1030	975	925	1770	550	250	630
RTQ 537 2S	1030	975	925	1945	550	250	731
RTQ 597 2S	1030	975	925	1945	550	250	726
RTQ 715 2S	1210	1150	1100	2115	655	300	953
RTQ 837 2S	1210	1150	1100	2210	655	300	1037
RTQ 920 2S	1280	1220	1170	2380	690	300	1237
RTQ 1020 2S	1335	1285	1235	2515	715	450	1530
RTQ 1250 2S	1430	1360	1310	2835	755	400	2257
RTQ 1500 2S	1530	1450	1400	2965	820	400	2570
RTQ 1700 2S	1610	1535	1485	3125	865	450	2841
RTQ 2020 2S	1680	1605	1555	3115	900	450	3340
RTQ 2320 2S	1750	1655	1605	3210	925	450	3725
RTQ 2620 2S	1925	1800	1750	3455	1015	450	4667
RTQ 2920 2S	1995	1865	1815	3560	1050	500	4826
RTQ 3200 2S	1996	1865	1815	3611	1050	500	4905
RTQ 3500 2S	2055	1935	1885	3670	1080	500	5346
RTQ 4000 2S	2140	2040	1990	4004	1155	550	6195
RTQ 4500 2S	2170	2070	2020	4254	1170	600	6790
RTQ 5000 2S	2355	2230	2180	4521	1250	650	7965

Pressurized steel boilers, that can be matched with any fuel jet burners. Provided with completely wet combustion chamber with free dilation and flame-inversion. Equipped with removable high-efficiency stainless steel turbulators ensuring an optimized heat exchange and a homogeneous thermal load.

The front door features an ambidextrous opening and is provided with a mineral-wool double seal. Casing is made of stove-enamelled sheet.

The control panel should be ordered separately.

- Operation at modulating temperature (minimum allowed return temperature 55 °C)
- Several solutions thanks to the combination with RIELLOtech control boards.

## TECHNICAL DATA

Description	Output kW	Input kW	Efficiency P <sub>n</sub> (80°-60 °C)	Efficiency 30% P <sub>n</sub> (80°-60 °C)	Code
RTQ 50 2S	50	54,2	92,2	95,1	20136573
RTQ 64 2S	64	69,3	92,3	95,3	20136574
RTQ 82 2S	82	88,8	92,3	95,4	20136575
RTQ 105 2S	105	113,6	92,4	95,7	20136577
RTQ 154 2S	154	166	92,9	91,4	20136578
RTQ 203 2S	203	217	93,4	-	20136579
RTQ 235 2S	235	255	92,3	92,8	20136580
RTQ 297 2S	297	318	93,4	-	20136581
RTQ 323 2S	323	348	92,8	93,3	20136582
RTQ 357 2S	357	384	92,9	93,3	20136583
RTQ 418 2S	418	448	93,3	-	20136584
RTQ 467 2S	467	500	93,4	93,3	20136585
RTQ 537 2S	537	575	93,4	-	20136587
RTQ 597 2S	597	639	93,4	93,3	20136588
RTQ 715 2S	715	766	93,4	-	20136589
RTQ 837 2S	837	896	93,4	93,3	20136590
RTQ 920 2S	920	990	92,9	93	20136592
RTQ 1020 2S	1020	1100	92,7	92,9	20136594
RTQ 1250 2S	1250	1338	93,4	93,3	20136595
RTQ 1500 2S	1500	1606	93,4	93,3	20136598
RTQ 1700 2S	1700	1820	93,4	93,3	20136599
RTQ 2020 2S	2020	2162	93,4	93,3	20136600
RTQ 2320 2S	2320	2485	93,4	93,3	20136601
RTQ 2620 2S	2620	2830	92,5	92,8	20136602
RTQ 2920 2S	2920	3150	92,7	92,9	20136603
RTQ 3200 2S	3200	3450	92,7	92,9	20136605
RTQ 3500 2S	3500	3780	92,7	92,9	20136606
RTQ 4000 2S	4000	4315	92,7	92,9	20136607
RTQ 4500 2S	4500	4854	92,7	92,9	20136608
RTQ 5000 2S	5000	5394	92,7	92,9	20136609

Maximum operating pressure 6 bar for RTQ 2S 50 - 5000 models.

**ACCESSORIES**

Description	Code
<b>MECHANICAL ACCESSORIES</b>	
Burner flange	<b>20043900</b>
Burner flange	<b>20047680</b>
Burner flange	<b>4031188</b>
Burner flange	<b>4031395</b>
Burner flange	<b>20076596</b>
Burner flange	<b>20076618</b>
Burner flange	<b>20067631</b>
Burner flange	<b>4031196</b>
Burner flange	<b>20043899</b>
Burner flange	<b>4031186</b>
Burner flange	<b>4031192</b>
Burner flange	<b>4031198</b>

**CONTROL PANELS**

Description	Installation	Boiler models	Code
RIELLOtech CLIMA COMFORT	Horizontal	RTQ 2S 50-2620	<b>4031064</b>
RIELLOtech CLIMA COMFORT	Vertical	RTQ 2S 715-5000	<b>4031069</b>
RIELLOtech PRIME	Horizontal / Vertical	All models	<b>20010820</b>
RIELLOtech PRIME ACS	Horizontal / Vertical	All models	<b>20010437</b>

NOTE: for specific accessories, connection MODBUS and more details on control panels, please refer to page 323.

RECOMMENDED COMBINATIONS WITH BURNERS - EU COUNTRIES

Description	Back-pressure in combustion chamber (mbar)	Gas burner										Burner flange			Control panels																								
		Yellow flame (Standard)																																					
		One stage	Two stage					Modulating																															
		-	-					Mechanical cam																															
		RS 44/1 MZ TL	RS 44 MZ TL	RS 50 TL	RS 70 TL	RS 100 TL	RS 130 TL	RS 150 TL	RS 190 TL	RS 44/M MZ TL	RS 50/M MZ TL	RS 70/M TL	RS 100/M TL	RS 150/M TL	RS 190/M TL	RS 250/M MZ TL	RS 310/M MZ FS1	RS 410/M MZ FS1	RS 510/M MZ FS1	RS 610/M MZ FS1	Burner flange	Burner flange	Burner flange	Burner flange	Burner flange	Burner flange	Burner flange	RielloTech Prime	RielloTech Klima Comfort	RielloTech Klima Comfort	Two stage burner management kit	3-point modulation kit							
		3788611	3789111	3784703	3785103	3785303	3785503	20044637	20030087	3788811	3781623	3789611	3789711	20044639	20052616	3788411	20068343	20068356	20068027	20066706	20043900	20047680	4031188	4031395	20076596	20076618	20067631	20010820	4031069	4031064	4031067	20013035							
RTQ 418 2S	2,9	●																																					
	2,9		●																					●															
	2,9								●															●															
RTQ 467 2S	3,3			●																				●															
	3,3									●														●															
RTQ 537 2S	3,0				●																		●																
	3,0										●												●																
RTQ 597 2S	5,1				●																		●																
	5,1										●												●																
RTQ 715 2S	4,7				●																		●																
	4,7											●											●																
RTQ 837 2S	8,1					●																	●																
	8,1											●											●																
RTQ 920 2S	4,6					●																	●																
	4,6											●											●																
RTQ 1020 2S	4,6					●																	●																
	4,6											●											●																
RTQ 1250 2S	5,8						●																●																
	5,8												●										●																
RTQ 1500 2S	5,4							●															●																
	5,4												●										●																
RTQ 1700 2S	7,2								●														●																
	7,2													●									●																
RTQ 2020 2S	4,8								●															●															
	4,8														●									●															
RTQ 2320 2S	4,2															●								●															
RTQ 2620 2S	6,0																●							●															
RTQ 2920 2S	6,3																	●						●															
RTQ 3200 2S	7,9																		●					●															
RTQ 3500 2S	7,9																			●				●															
RTQ 4000 2S	7,7																							●															
RTQ 4500 2S	8,0																							●															
RTQ 5000 2S	7,9																							●															

NOTE: the gas burners must be completed with the gas train.  
 NOTE: for specific accessories, connection MODBUS and more details on control panels, please refer to page 323.

Description	Back-pressure in combustion chamber (mbar)	Oil burner										Dual fuel burner					Burner accessory	Burner flange					Control panels													
		Yellow flame (Standard)																																		
		Two stage					Modulating					Two stage		Modulating																						
		-					Mechanical cam					-		Mechanical cam																						
		RL 50 TL	RL 70 TL	RL 100 TL	RL 130 TL	RL 190 TC	RL 250 MZ TC	RL 38/M TL	RL 50/M TL	RL 70/M TL	RL 100/M TL	RL 130/M TL	RL 190/M TL	RLS 38	RLS 50	RLS 70	RLS 100	RLS 130	RLS 190/M MZ	RLS 250/M MZ	Extended head	Extended head	Extended head	Burner flange	Burner flange	Burner flange	Burner flange	Burner flange	Burner flange	RielloTech Prime	RielloTech Clima Comfort	RielloTech Clima Comfort	Two stage burner management kit	3-point modulation kit		
RTQ 418 2S	2,9	●																																		
	2,9						●																													
	2,9													●																						
RTQ 467 2S	3,3	●																																		
	3,3							●																												
	3,3													●																						
RTQ 537 2S	3	●																																		
	3							●																												
	3																																			
RTQ 597 2S	5,1		●																																	
	5,1								●																											
	5,1																																			
RTQ 715 2S	4,7		●																																	
	4,7									●																										
	4,7																																			
RTQ 837 2S	8,1			●																																
	8,1										●																									
	8,1																																			
RTQ 920 2S	4,6			●																																
	4,6										●																									
	4,6																																			
RTQ 1020 2S	4,6			●																																
	4,6																																			
	4,6																																			
RTQ 1250 2S	5,8				●																															
	5,8																																			
	5,8																																			
RTQ 1500 2S	5,4					●																														
	5,4																																			
	5,4																																			
RTQ 1700 2S	7,2					●																														
	7,2																																			
	7,2																																			
RTQ 2020 2S	4,8					●																														
	4,8																																			
	4,8																																			
RTQ 2320 2S	4,2						●																													
	4,2																																			
RTQ 2620 2S	6,0						●																													

NOTE: the light oil burners must be completed with the light oil nozzles.  
 NOTE: for specific accessories, connection MODBUS and more details on control panels, please refer to page 323.

HEAT PUMPS  
 WALL-HUNG BOILERS  
 FLOOR-STANDING BOILERS  
 WATER-HEATERS  
 SOLAR THERMAL AND CYLINDERS  
 CENTRALIZED HEATING  
 AIR CONDITIONING  
 TERMINAL UNITS  
 SYSTEM COMPLEMENTARY ITEMS  
 HOT AIR GENERATORS









Description	Back-pressure in combustion chamber (mbar)	Dual fuel burner						Burner accessory		Burner flange						Control panels					
		Yellow flame (Standard)																			
		Two stage			Modulating																
		-						Mechanical cam													
		RLS 28	RLS 38	RLS 50	RLS 70	RLS 100	RLS 130	RLS 190/M MZ	RLS 250/M MZ	Extended head	Extended head	Burner flange	Burner flange	Burner flange	Burner flange	Burner flange	Burner flange	Burner flange	RielloTech Prime	Two stage burner management kit	
		20147897	20147803	20147805	20147798	20147799	20147800	20159361	20145372	20097868	20097869	20043900	20047680	403188	403192	403196	403198	4031395	20067631	20010820	4031067
RTQ 203 2S	1,8	•																	•	•	
RTQ 235 2S	2,7	•																•	•	•	
RTQ 297 2S	3,5		•												•				•	•	
RTQ 323 2S	3,9		•												•				•	•	
RTQ 357 2S	4,1		•															•	•	•	
RTQ 418 2S	2,9		•							•								•	•	•	
RTQ 467 2S	3,3			•							•							•	•	•	
RTQ 537 2S	3,0				•										•				•	•	
RTQ 597 2S	5,1				•										•				•	•	
RTQ 715 2S	4,7				•										•				•	•	
RTQ 837 2S	8,1					•												•	•	•	
RTQ 920 2S	4,6					•												•	•	•	
RTQ 1020 2S	4,6					•						•							•	•	
RTQ 1250 2S	5,8						•					•							•	•	
RTQ 1500 2S	5,4							•					•						•	•	
RTQ 1700 2S	7,2							•					•						•	•	
RTQ 2020 2S	4,8								•										•	•	

NOTE: the light oil burners must be completed with the light oil nozzles.  
 NOTE: for specific accessories, connection MODBUS and more details on control panels, please refer to page 323.

HEAT PUMPS

WALL-HUNG BOILERS

FLOOR-STANDING BOILERS

WATER-HEATERS

SOLAR THERMAL AND CYLINDERS

CENTRALIZED HEATING

AIR CONDITIONING

TERMINAL UNITS

SYSTEM COMPLEMENTARY ITEMS

HOT AIR GENERATORS